

# **EXHIBIT 107**

Table 3

Collection Date	Blind Sample #	UCI Sample #	5alpha diol-Pdiol	5beta diol-Pdiol	Andro-11 Keto	Etio-11 Keto	LNDD Page #
7/3/2006	993865	995462	—	-1.04	0.22	-0.95	LNDD1488
7/11/2006	993856	994203	-2.91	-1.05	-0.25	-1.29	LNDD1391
7/13/2006	993855	994277	<b>-4.62</b>	<b>-4.09</b>	-1.99	-2.32	LNDD1106
7/14/2006	825425	994276	-1.01	-0.70	-1.70	-1.04	LNDD1297
7/18/2006	825428	994075	<b>-5.06</b>	<b>-3.56</b>	-1.22	-1.89	LNDD0915
7/20/2006	*****	995474A	<b>-6.14</b>	-2.15	<b>-3.99</b>	-2.58	USADA0186
7/20/2006	*****	995474B	<b>-6.39</b>	-2.65	<b>-3.51</b>	-2.02	USADA0352
7/22/2006	825429	994080	<b>-4.80</b>	-1.67	-1.36	-1.68	LNDD1012
7/23/2006	825424	994171	<b>-4.96</b>	-1.45	-0.64	-1.43	LNDD0725
Aguilera	825427	**NL1**	-1.31	-0.95	0.00	-0.94	LNDD1582
Aguilera	825426	**NL2**	-0.77	-0.88	0.32	-0.74	LNDD0820
Aguilera	825423	**NL3**	-1.21	-0.79	0.09	-0.91	LNDD1203

Figure 22

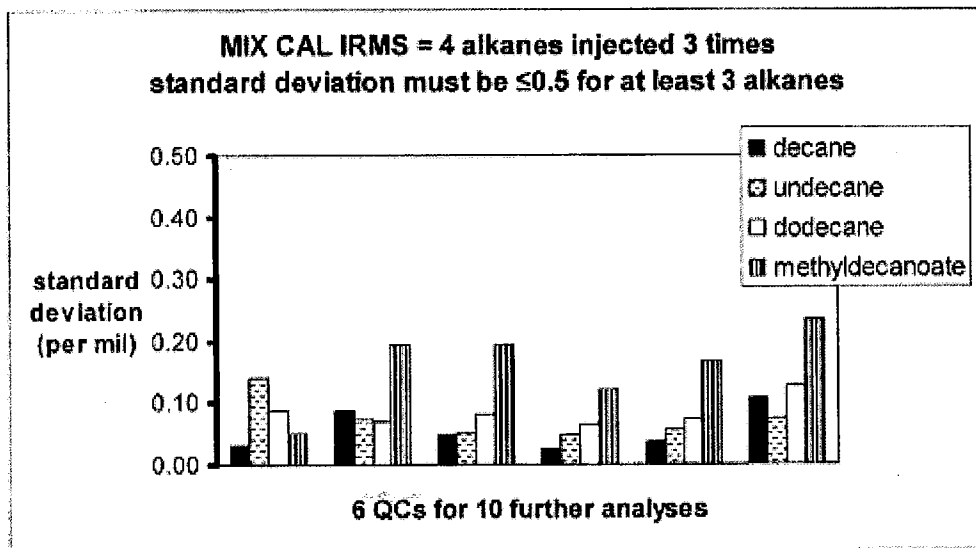


Figure 23

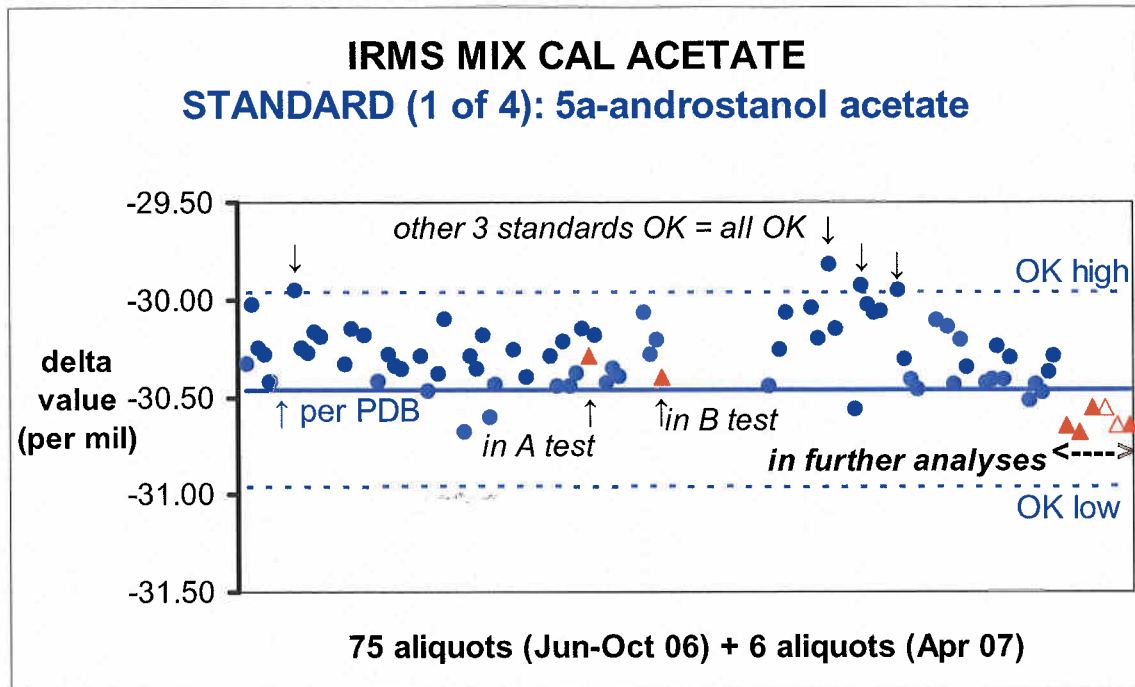


Figure 24

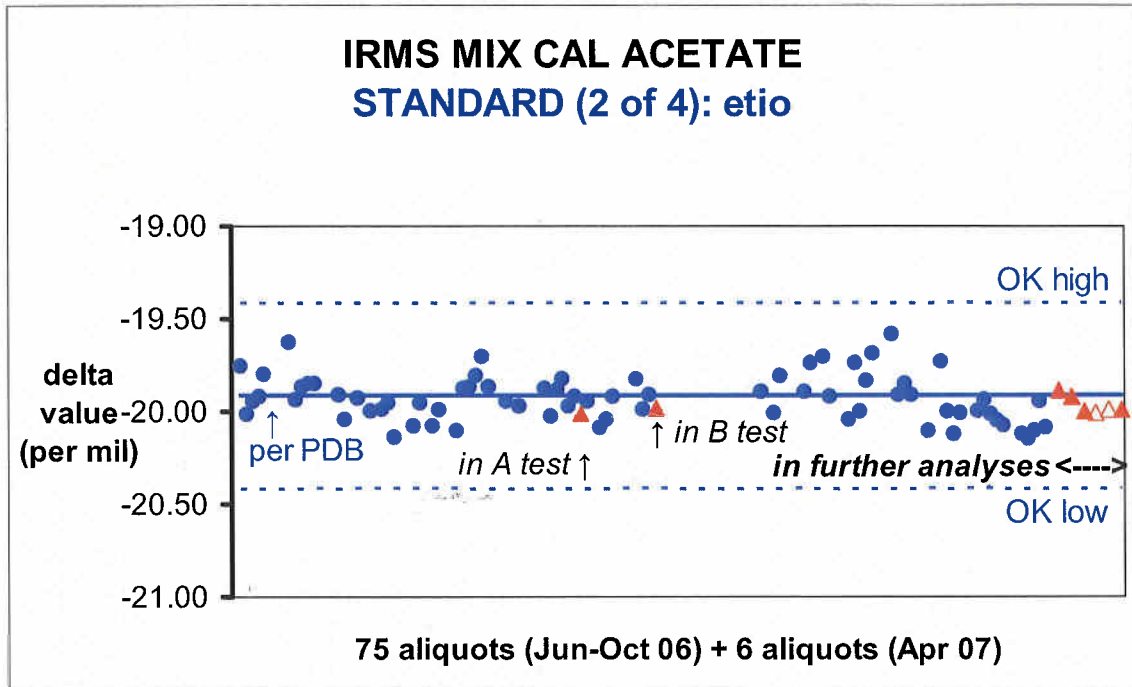


Figure 25

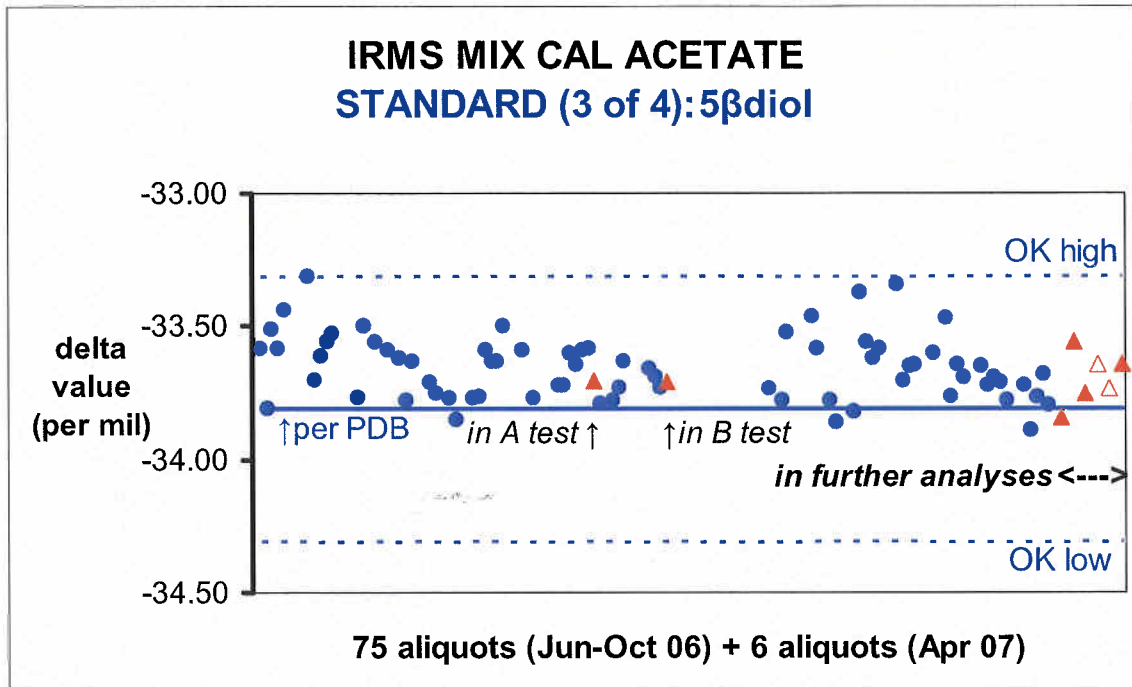


Figure 26

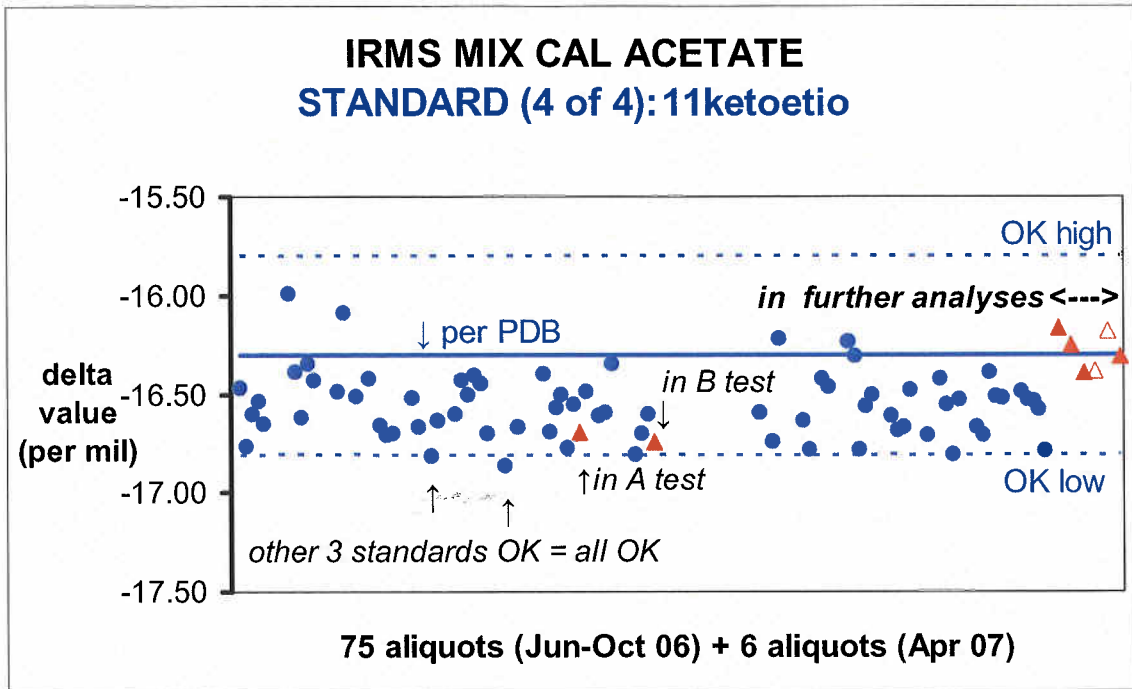


Figure 27

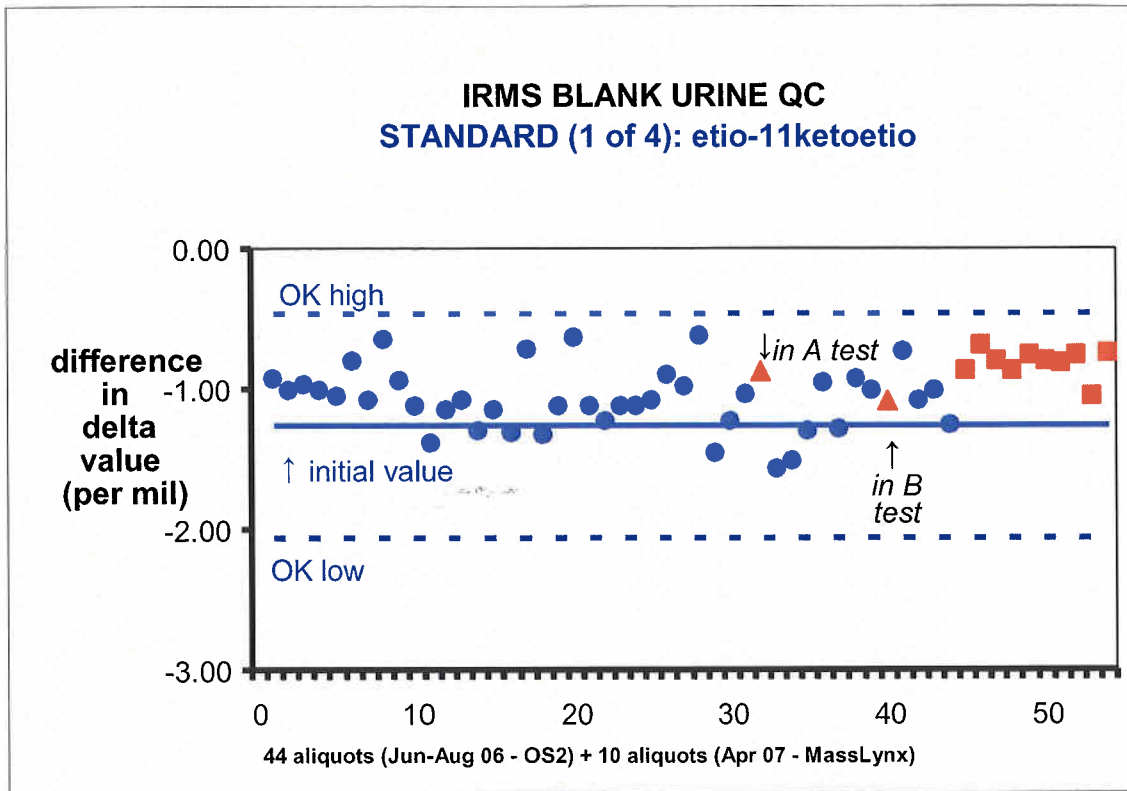




Figure 28

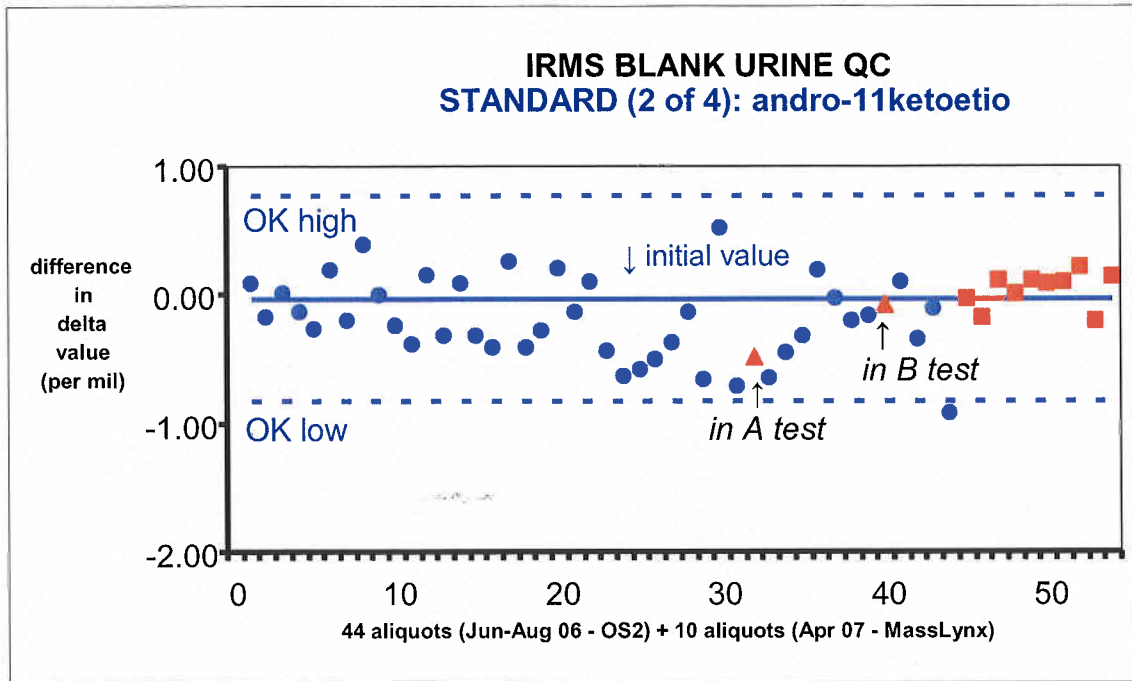


Figure 29

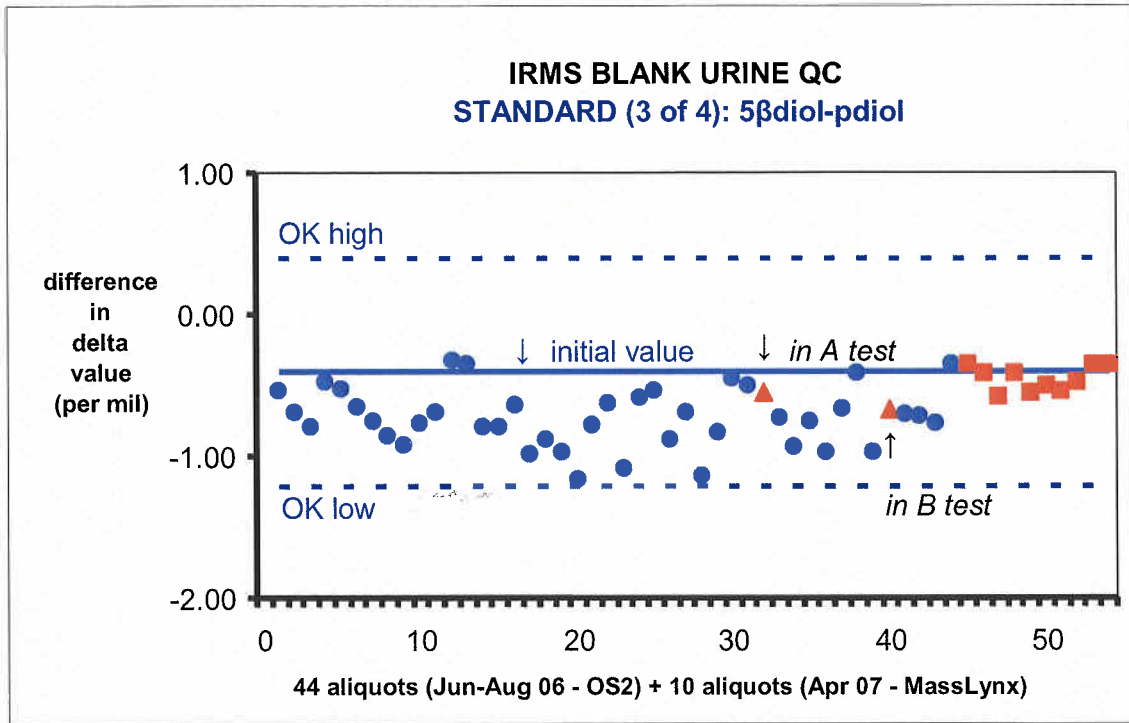


Figure 30

